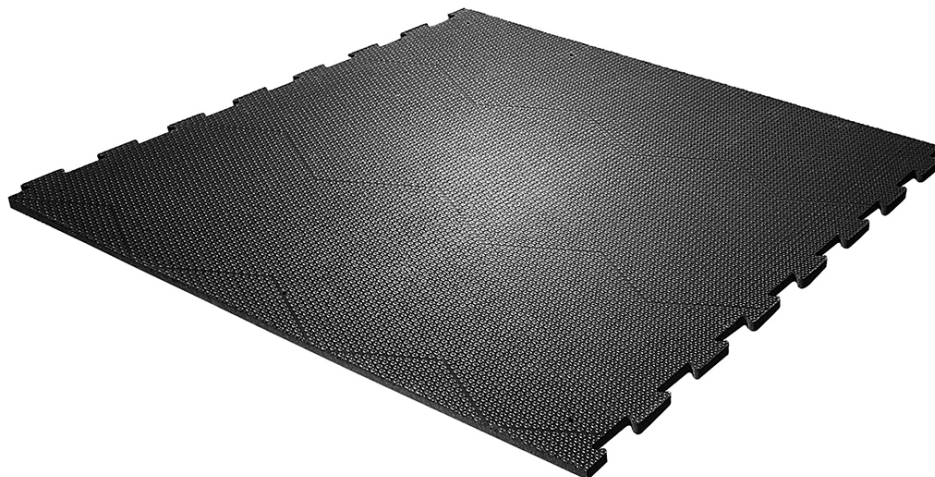
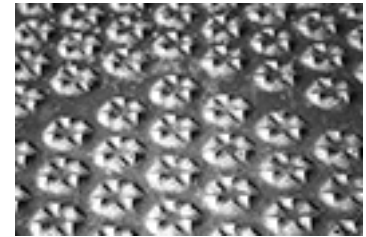


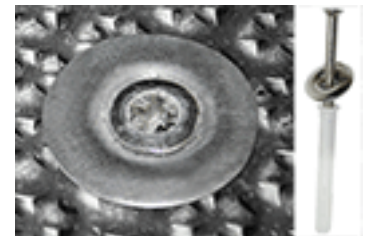
profiKURA P



Your KRAIBURG dealer:



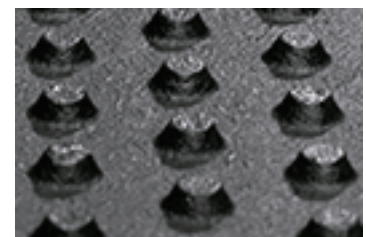
optiGrip-surface



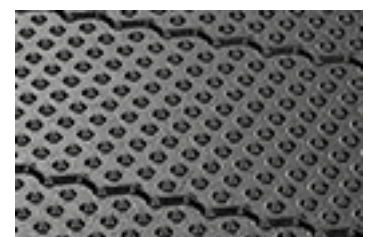
KRAIBURG fastening system:
extremely sturdy, rounded off and flush
with the mat



reinforced puzzle-shaped edges



stud profile for ideal softness



dirt barriers reduce soiling underneath
the mats

For paved / concrete floor with a slope animal-friendly softness, optimized claw abrasion and improved grip:

- optiGrip-surface with incorporated abrasive corundum
 - » high slip resistance
 - » contributes to correct claw form through even abrasion
- improved walking comfort
 - » supports claw health and mobility
 - » promotes feed intake and high yield
- permanently stable in position and form
- puzzle compensates for natural thermal expansion, practically a seamless floor area
- the puzzle section parallel to the cleaning flaps is especially reinforced, so that the scraper can slide safely across it
- simple and fast installation of easy-to-handle single mats
- suitable for new construction as well as for renovation
- manure removal with scraper and driving on mats possible*

>> especially for areas with high solar radiation: profiKURA P SUN (with expansion slits in the mat)

Floor prerequisites:

- 3 % slope towards urine-collecting gutter

About corundum:

- the **second hardest mineral** after diamonds
- does not react with acids and bases: best precondition for use in slurry environments
- patented technology which has been well-proven in the KRAIBURG-group for many years
- in practice, an exceptionally high level of sure-footedness has been demonstrated

Dimensions:

Fits very exactly - width can be adapted in 2 cm increments

thickness: 24 mm

width x length: in 2 cm increments from 96 cm to 500 cm (possibly several mat pieces are puzzled together) x 125 cm

Advice on claw trimming:

profiKURA maintains the claw form, but claw trimming is still necessary!

Claws must still be trimmed regularly, but only for the purpose of claw care and

less for position correction or complex treatment. We recommend **functional claw trimming 4 to 6 weeks before the mats are installed.**

Important: do not install the mats at the same time you trim claws, because the claw has to become accustomed to the abrasion.

Scraper manure removal on rubber flooring has already been proven in practice:

In principal we recommend the use of **scrapers specifically developed for rubber floors.**

For structural alterations it is necessary to **adapt the scraper facilities** in coordination with the scraper manufacturer, according to the KRAIBURG guidelines for manure scrapers.*

Important: check the scraper at least once a year and grind off the sharp edges!

Driving over:

profikURA P can be driven on with standard equipment such as farm yard loader or tractor with authorized pneumatic tyres at the **recommended inflation pressure up to max. 4 bar.** (Notice: drive with due care and steer in large radius!*)

Installation:

easy and fast installation with KRAIBURG fastening system (part of delivery)*

* Please take notice of the corresponding KRAIBURG specifications and installation instructions with useful advice and tips.

>>>The products presented here should only be used for the mentioned applications. Technical specifications are subject to alterations. All sales are subject to our General Terms and Conditions. Legal basis is the German version of the document.

Tolerances:

thickness:

+3/-2 mm

The tolerances also apply within the mat and when installed.

length + width:

+/- 1.5 % (DIN ISO 3302-1 tolerance class M4)